



TRINNOV



HIGH-END

TRINNOV

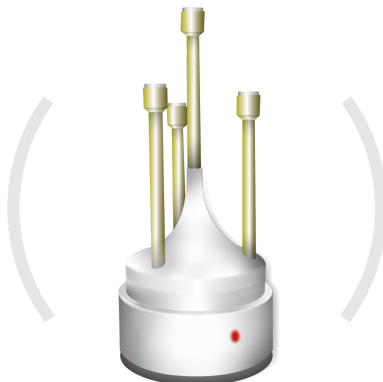


PRO-AUDIO

TRINNOV



CINEMA

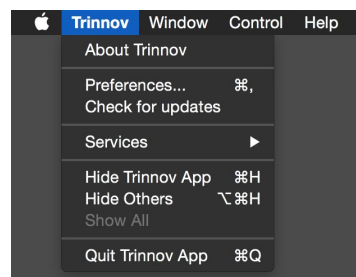


# Trinnov App. user manual

V 3.1 - 10/2020

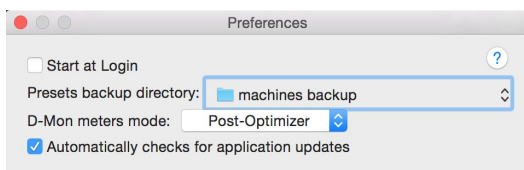
## - Trinnov menu, check for update

Automatically check if a newer version is available. We strongly suggest migrating to the latest available release. The release notes are displayed in case of a new version available explaining the changes (bug fixes, new features...) to help you to make the appropriate decision regarding the timing for when applying this update.



## - Trinnov menu, Preferences

Machine connection features are located in the so-named entry, available from the "Control" top menu.



The preset backup directory is the base location for remote machines back up, a directory tree will be created inside (per device and backup date).

The DMon meters mode allows the choice for the floating meter window to take its signal from the optimizer input (at the input stage, after sources summation, with source(s) gain applied) or output (after all optimization process, bass management, main volume gain).

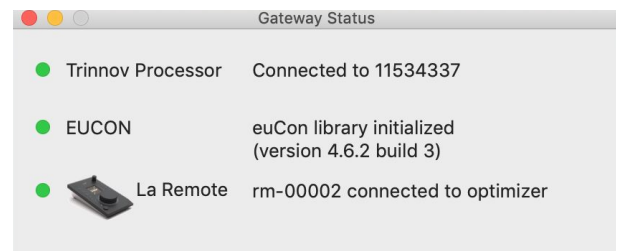


## - Windows/gateway status

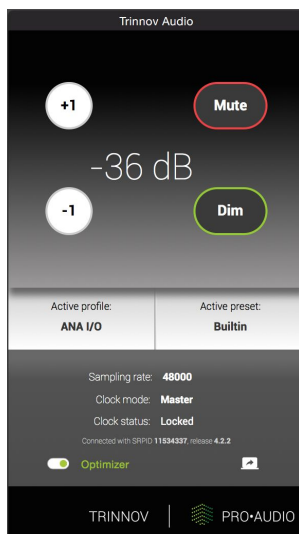
This panel allows monitoring of the network connexions handled by the Trinnov application around your workstation.

The first item represents the uplink to the processor, used for both shortcuts and EUCON integration if any. The second describes the state of the EUCON library, if activated. Please refer to the EUCON setup note at the end of this document for more details.

The last item gives information about the Trinnov Audio USB remote control device, which could be directly connected to the workstation where this Trinnov Application is running.



## - Windows/minimal interface



Depending on your processor model, the Trinnov App displays the main control panel of the Trinnov (for the web-based devices having software version 4 or above), or a minimalistic virtual remote to control the base features.

In this last case, it is possible to change the current preset or profile by clicking on the current preset/profile button, then selecting the desired target item to be loaded.

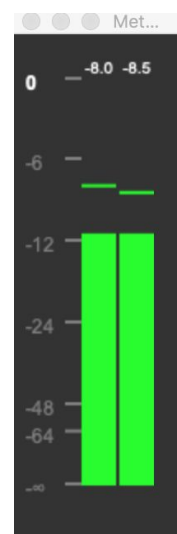
The bottom right icon allows the user to simply open the processor inner machine interface without password asked.

For processors running version 4 or above, this virtual remote can also be shown via the *Minimal interface* entry in the *Windows* menu. The main interface, if closed, can be shown again with the *Standard interface* entry menu.

## - Windows/meters

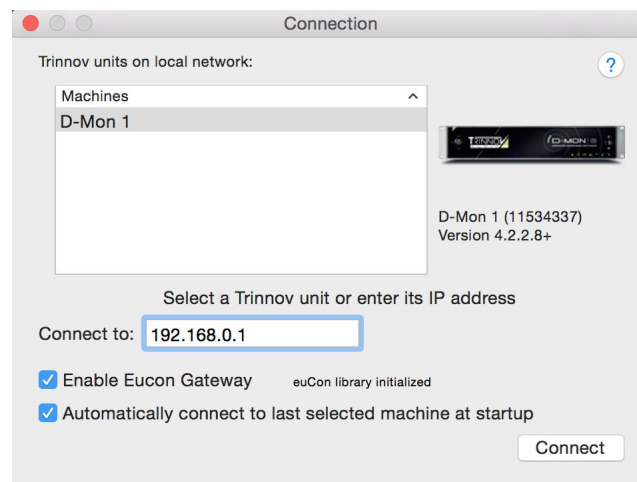
The D-Mon product lineup provide meters.

It makes use of the port 48000 on UDP, which should be allowed if your network is under control.



## - Control / Connect to machine

You can select the processor machine you want to control from this point. All local machines detected are automatically listed here. Selecting one in the list copy its IP address in the target "connect to" field.



### Note :

The detection process uses either a ZeroConf/Bonjour standard or a proprietary broadcast packet. If no machine is detected, due to network restrictions, it is still possible to manually enter an IP address.

The control protocol between the machine and this application uses the standard HTTP port 80, that must be authorized if your network is under control.

If the software version of your machine is anterior to release 4, the protocol used is the proprietary Trinnov "telnet" protocol on port 44100. Therefore to control those machines, you must suffix the IP address with ":44100" in the "connect to" field and authorize this port on your network if applicable.

If you want to use the EUCON feature of the application, the corresponding checkbox must be selected to register the Trinnov inside the workstation EUCON service.



TRINNOV



HIGH-END

TRINNOV



PRO-AUDIO

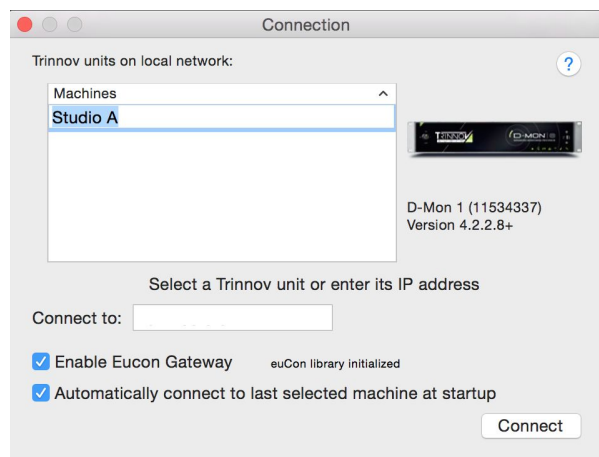
TRINNOV



CINEMA

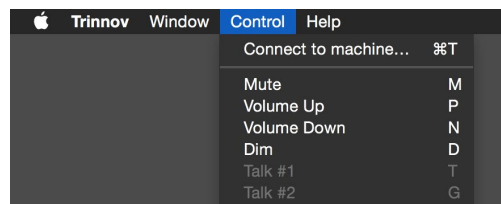
### Machine custom name:

It is possible to rename your device as it appears in the device list, to match the local configuration. To do so, select the machine in the list, and then click again on the name (not a double-click). Enter the new name and validate with "return." Machine custom names are stored on the machine itself, so other workstations on the local network will see this name. This feature is only available to up-to-date software version 4 users.



### - Control/monitoring features (Mute/Dim, Volume up & down, talkbacks)

You can control your device via this menu or the associated shortcuts. Talkback entries may be disabled if not applicable to your current device.

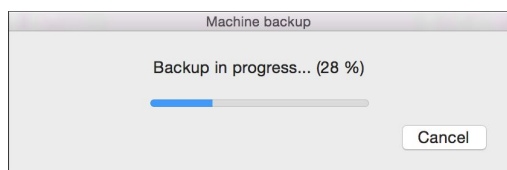


### - Control / machine interface

This opens the remote interface of your device (no password asked).

### - Control/machine backup

An integrated backup method is available to save all the machine parameters: presets, microphone compensation files, PDF reports, snapshots, profiles, user EQ or curves...



A progress status is displayed during the backup with a confirmation of the validity of the backup at the end of the process

The files are stored on your workstation inside the base location defined in the Trinnov application preferences, inside a per machine and per backup directory.



## - EUCON

Integrate your Trinnov device easily with Avid® EUCON enabled hardware (S6, Dock, iPad app...) featuring the complete monitoring controls: main volume, dim, mute, talkbacks, cues management, foldowns, sources.... EUCON is a robust protocol that allows bidirectional commands (status report from the Trinnov up to the surface, orders from the surface back to the Trinnov).

Depending on your Trinnov processor model, only monitoring basic features are available. Advanced features like mix buses/cues or multiples sources summed at the input are only available to D-Mon users.

It is also possible to create custom keys to recall presets and profiles, which allows seamless integration of your listening configuration with your workflow.

The Trinnov app running on the workstation acts as a gateway between your Trinnov system and the EUCON control devices. You are advised to check the status windows to ensure the connexion of the two sides of this gateway: the uplink to the Trinnov device in one hand, and the EUCON initialization and link state in the other. To use this feature, the latest AVID® EUCON package must be installed on your workstation before the Trinnov application launch. Please refer to the Avid website for more information.